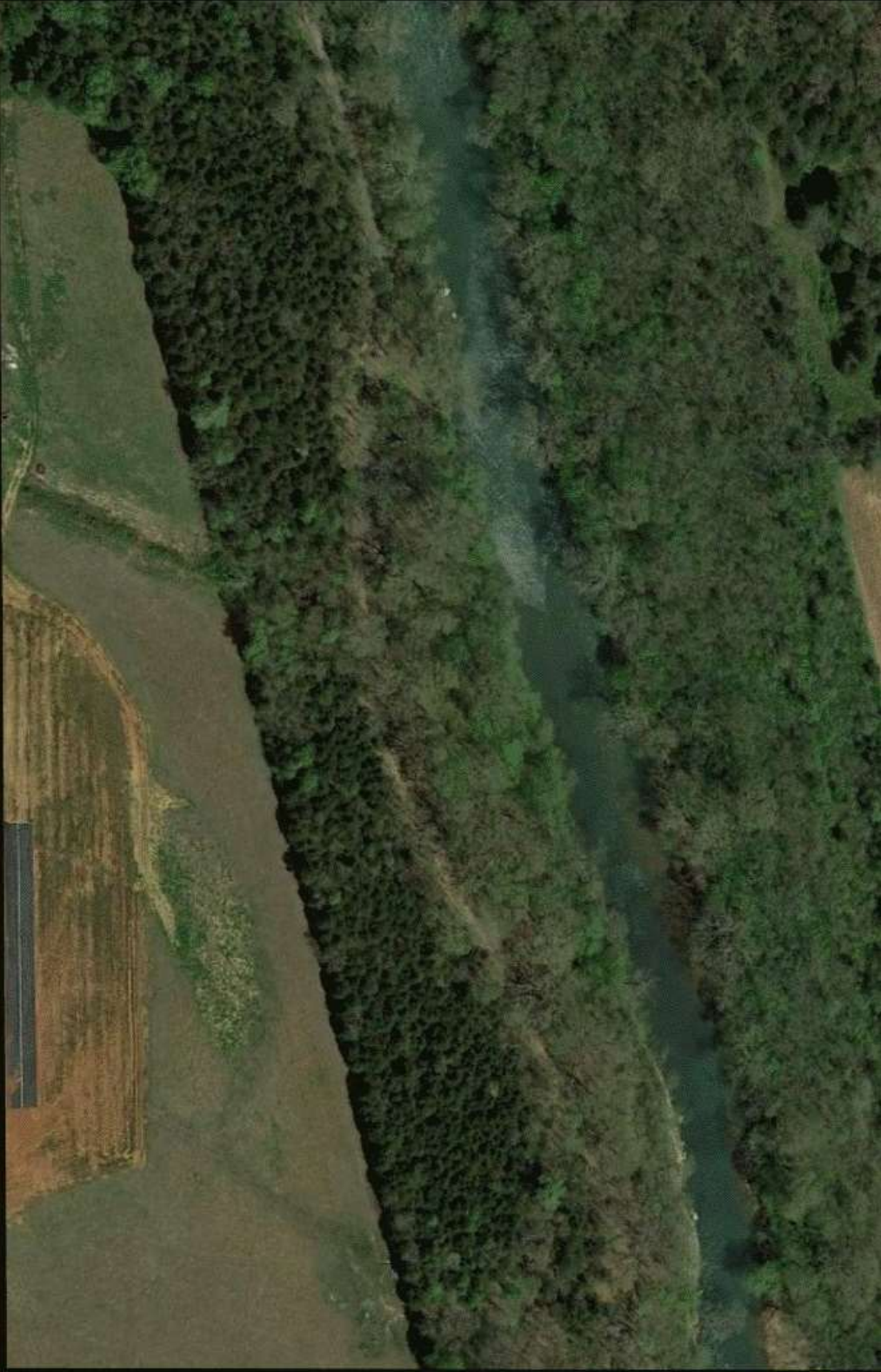


MIDDLE POINT RC FLYERS (MPCRF)

SAFETY AND FLIGHT RULES

1. All aircraft operations shall be in accordance with the official Academy of Model Aeronautics (AMA) National Model Aircraft Safety Code and these Safety and Flight Rules. Both documents are available on the club's website.
2. Pilots must have current AMA membership and be a member of MPCRF, or the guest of a member, to fly at the MPCRF field.
3. Guest pilots must have a current AMA membership. The sponsoring MPCRF member must accompany the guest at all times and is responsible for ensuring that the guest understands and abides by all club rules and is competent to fly.
4. Flying is permitted between 9:00am and dusk for internal combustion aircraft. Electric aircraft with wingspands less than 52" have no restrictions.
5. Non-2.4 GHz radios are used at your own risk and require communication with other pilots to ensure no conflicts. Pilots are expected to maintain proper rotation with other pilots when sharing frequencies.
6. A Frequency Control Board may be in use at the field and if so its use is mandatory at all times for all pilots. Pilots, including 2.4 GHz, are expected to hang their membership card, or in the case of guests their AMA card, on the board when flying at the field.
7. The pit area is restricted to AMA members and their guests. Pilots are responsible for the safety and behavior of their guests when in the pit area.
8. There shall be no more than four (4) aircraft in the air at one time.
9. No flying is permitted behind the runway zero line nor beyond the south boundary area, per the attached field layout.
10. All pilots must fly from behind the pilot's flight station. Exceptions are allowed for flight instruction.
11. Pilots of internal-combustion powered aircraft and electric aircraft with wingspands of 52" or greater must fly with a spotter whose primary purpose is to aid the pilot in remaining within the south boundary area. The spotter must be familiar with the flight boundary area and familiar with RC flight operations. Spotters do not need to be R/C pilots.
12. The starting of all internal combustion powered aircraft and the energizing of all electric aircraft will occur at or beyond the starting stands. All aircraft must be pointed away from the parking area when starting or energizing.
13. All flights, including rotorcraft, will originate from the runway with takeoff and landing direction determined by reference to the windsock. No takeoffs from the pits is permitted.
14. Pilots shall ensure safe clearance onto the runway by looking both ways, then announcing their intent to take off prior to doing so. Pilots shall announce their intent to land prior to doing so.
15. All air traffic must follow the prevailing traffic pattern direction when other aircraft are in the air and pilots will coordinate any change in direction with other pilots then flying.
16. All high-speed passes and 3D flight are to be conducted over the grass portion of the runway.
17. Landing aircraft have the right-of-way; dead stick landings have priority.
18. No powered taxiing into the pit area beyond the giant scale starting station.
19. Each member is responsible for their own trash removal. If you brought it, take it home with you or properly deposit it in the club's trash cans. No cigarette butts are to be left on the ground.
20. Pets are permitted onsite but they must be leashed if they pose a hazard to pilots or aircraft. The pet owner is responsible for cleaning up after their pet.
21. It is the responsibility of all club members to enforce these rules. The Board of Directors is charged with the responsibility to administer discipline in cases where warranted.

NO FLY ZONE



CAUTION ZONE

NO FLY ZONE

400 ft

